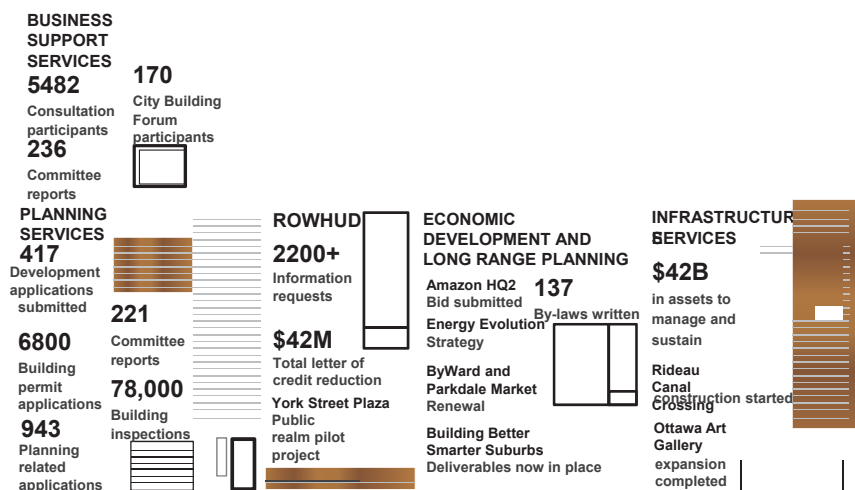


Planning, Infrastructure and Economic Development

Our Services



2017 Highlights



Planning, Infrastructure and Economic Development Vision



THE MOST LIVEABLE AND DYNAMIC MID SIZED
CITY IN NORTH AMERICA

Major Development Projects '5year outlook'

Master Plan Projects Multi-year Development

7

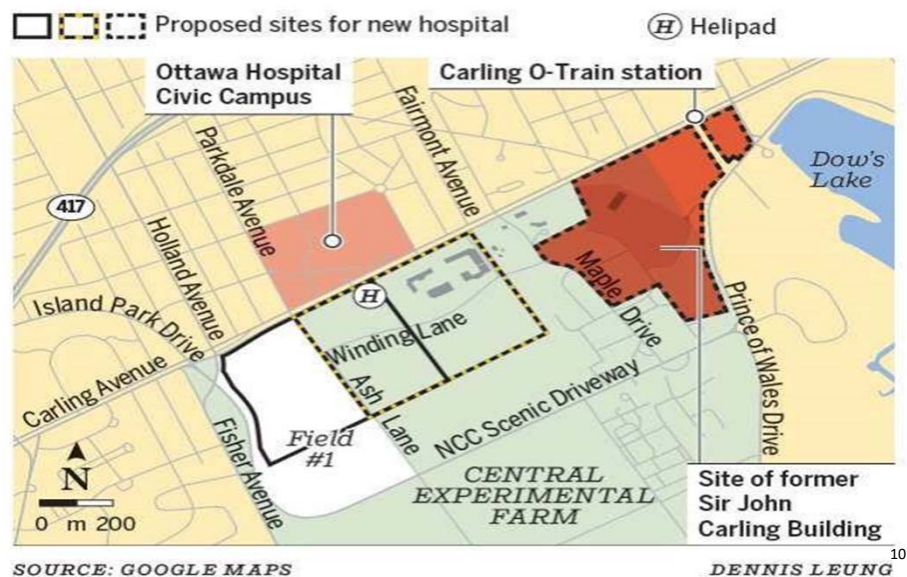
Lebreton Flats



Zibi



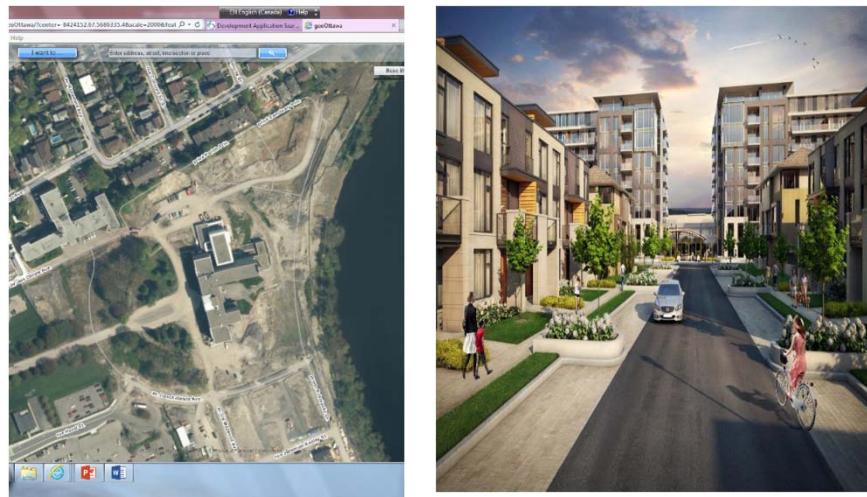
Ottawa Civic Hospital



Tunney's Pasture

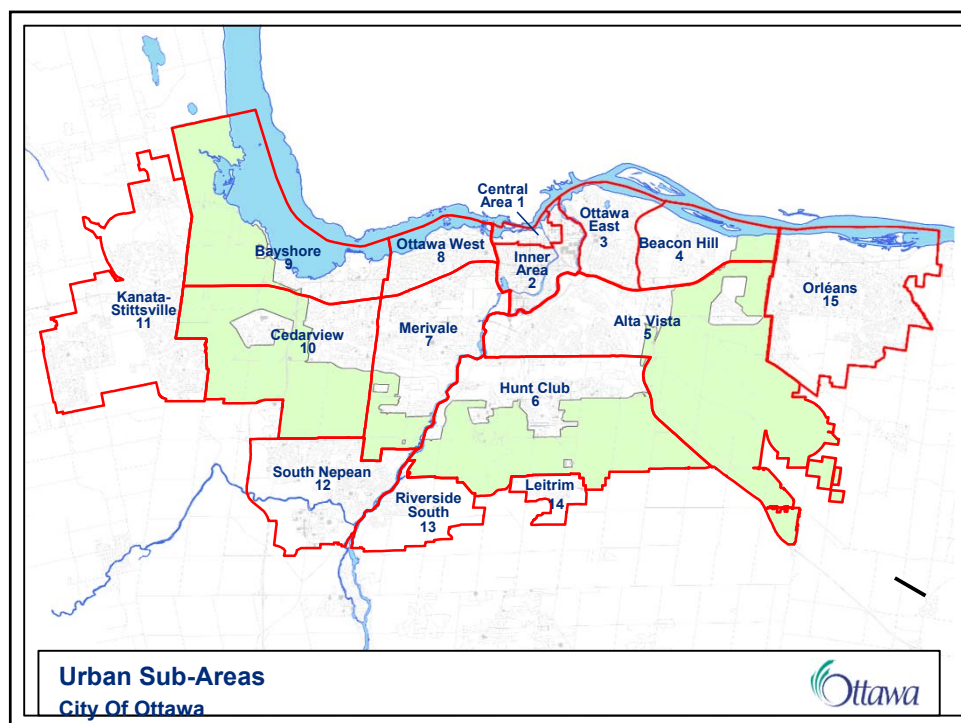
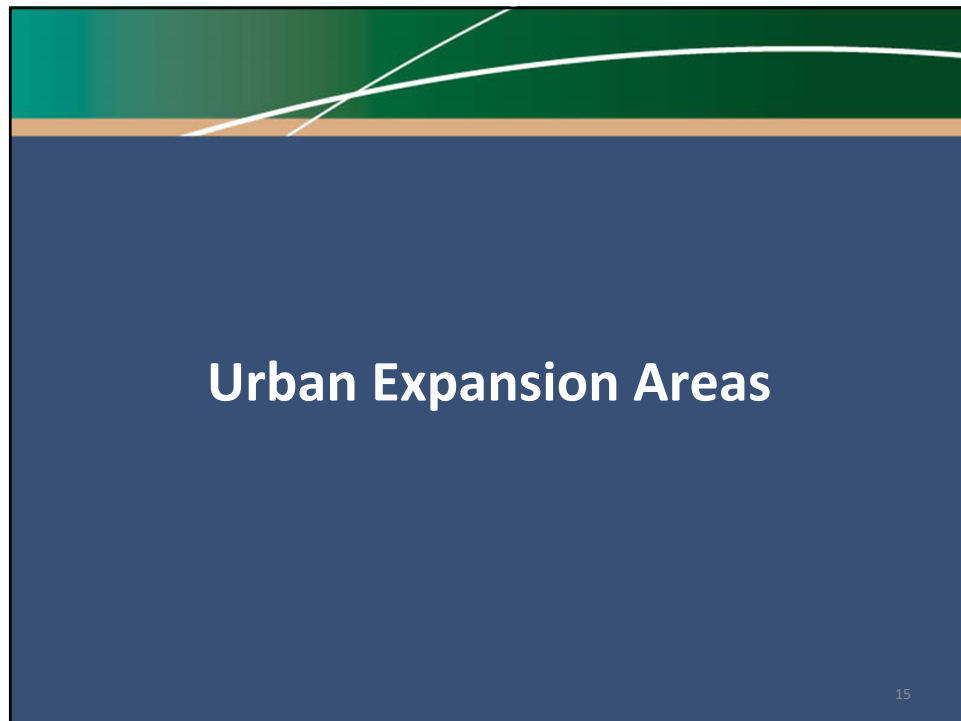


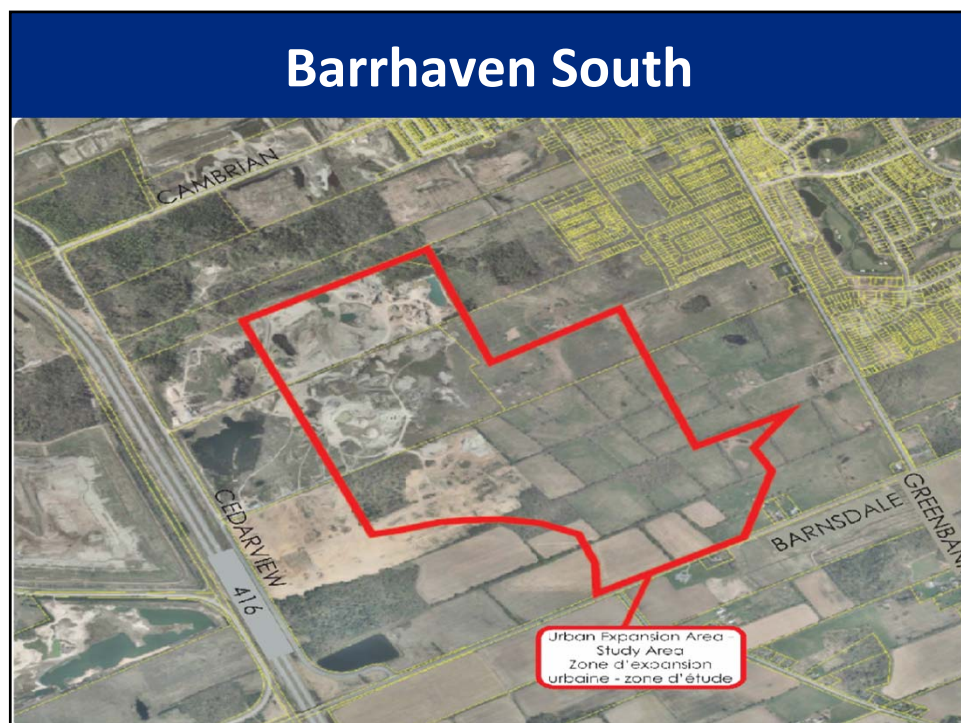
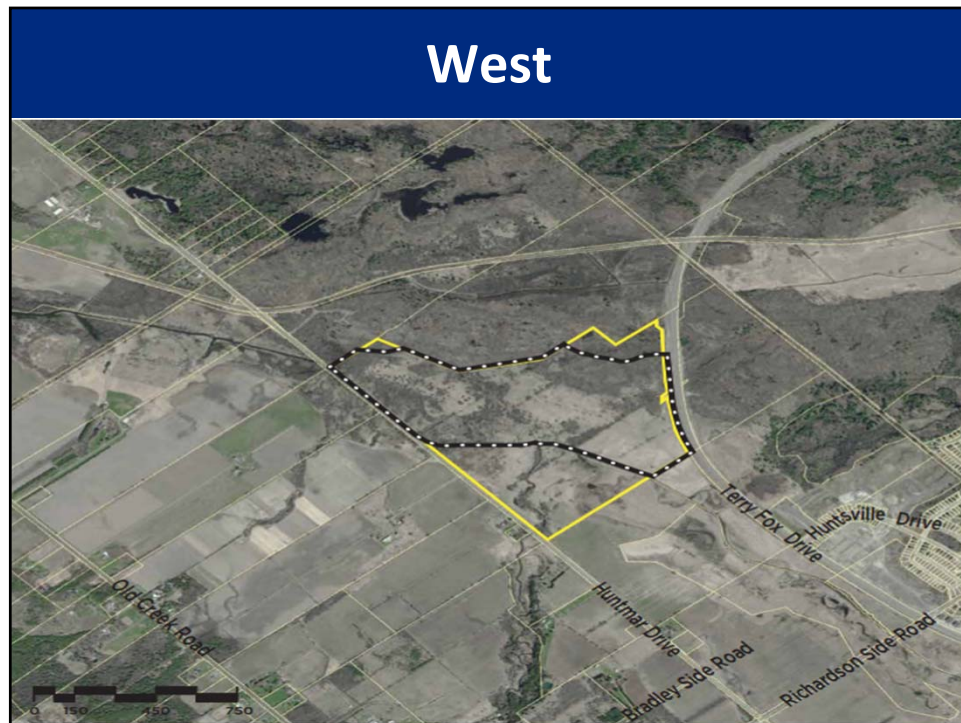
Greystone Village

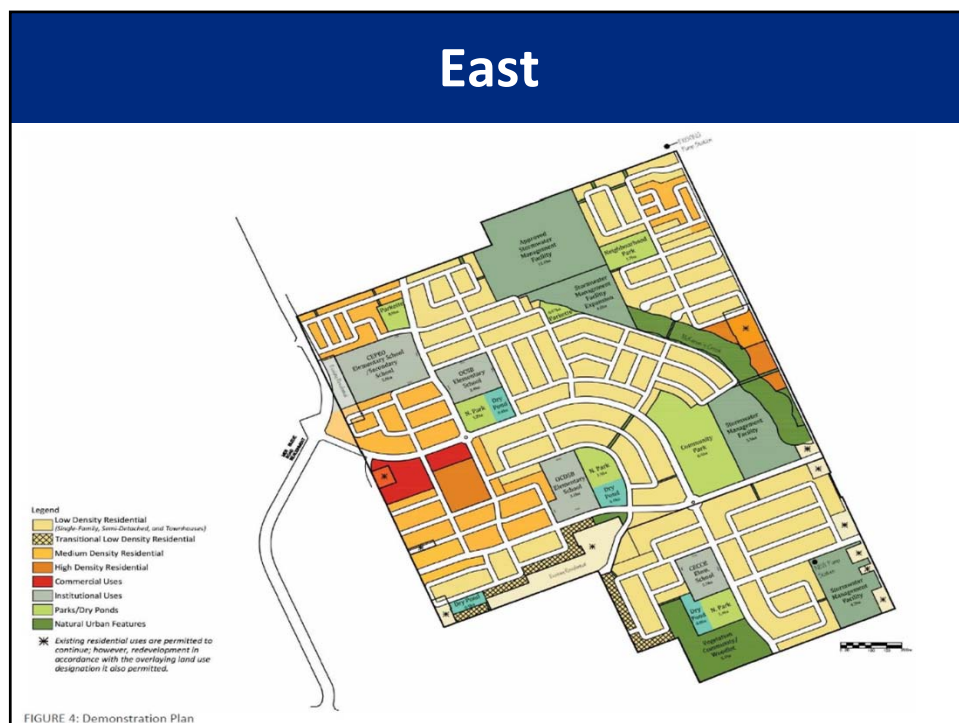
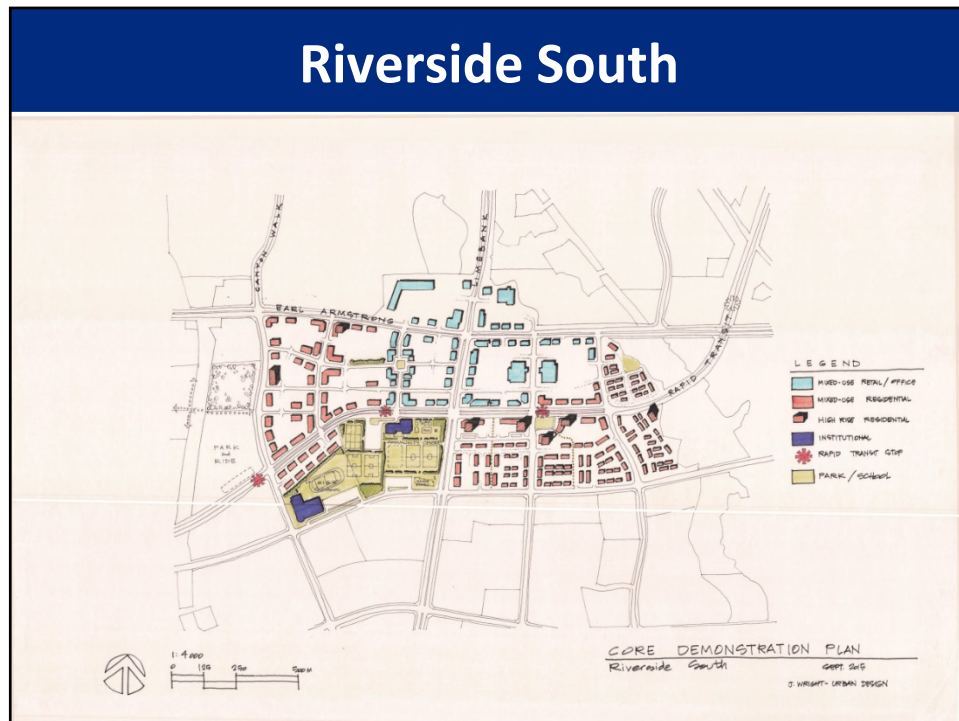


12









Shopping Center Redevelopment

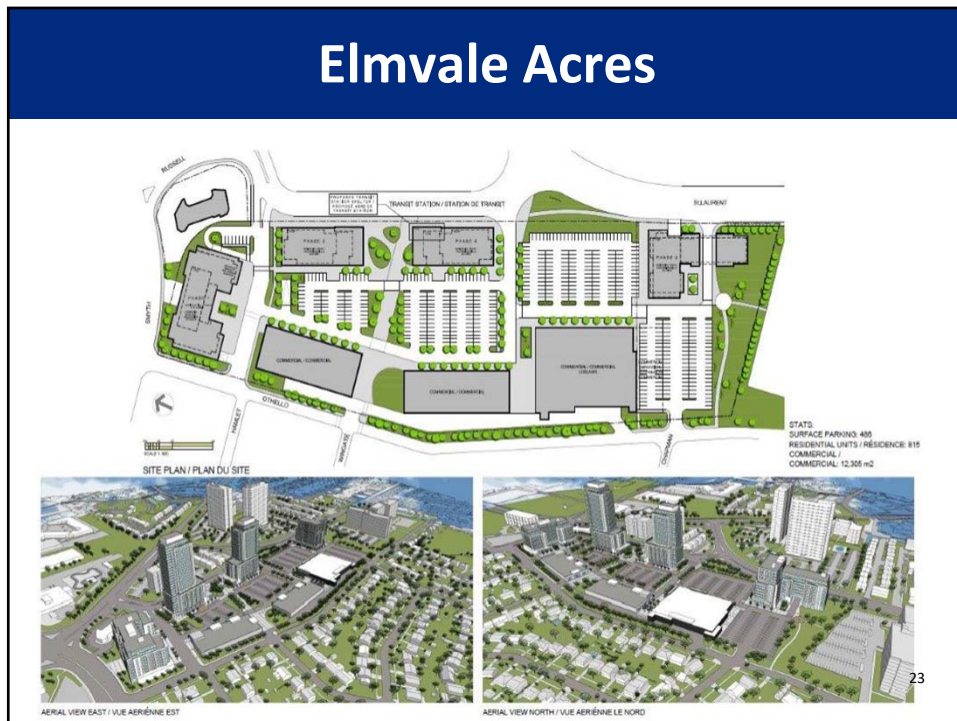
21

South Keys



22

Elmvale Acres



Shopper City East



Westgate



Key City Building/Place Making Projects

26

Bayview yards



Rideau Carleton



28



New Central Library

OPL ANNOUNCES LOCATION OF NEW CENTRAL LIBRARY

The Ottawa Public Library announced the location of the central library after considering 12 possible locations. A 216,000-square-foot building would be constructed at the easternmost part of a 3.56-acre property, about 50 metres west of Bronson Avenue and 290 metres east of the future Pimisi LRT station at Booth Street.

Sites considered for central library



SOURCE: OTTAWA PUBLIC LIBRARY

DENNIS LEUNG

High Rise Mixed Use Projects

31

900 Albert



Rideau Chapel



Claridge Lebreton



Questions

